

Classroom Utilization System

Version 3.3g

Report Samples

The following are sample reports from CU using a demonstration semester. Report generation criteria includes: Building, Room, School, Central/Local Scheduling, Room Type.

Page	Description
2-6	Report Descriptions
7	Report #3, Daily Classroom Use and Availability (All Rooms)
8	Report #6, Classroom Availability- Weekday Comparison (All Rooms)
9	Report #8, Classroom Utilization/Seatfill Detail (One Room)
10	Report #24, Room Use Data Analysis (All or Selected)

Analysis Samples

The following print-outs can be generated on the fly for quick analysis or comparison. Analysis types include: semester comparison, room comparison and semester or room trends. Analysis generation criteria generally includes: Building, Room, School, Central/Local Scheduling, Room Type.

Page	Description
11	Classroom Utilization - Weekday Overview for All Buildings - Shows utilization for the entire university
12	Classroom Utilization- Weekday Overview for a Single Room - Shows utilization for a single space
13	Classroom Comparison - Shows the utilization/seatfill performance for any two rooms in the semester library

REPORT DESCRIPTIONS

Name

1 Class Sessions Summary

Provides a list by day of the total enrollments for session start and end time with enrollment totals for ranges 1-30, 31-40, 41-50, 51-60, 61-75, 76-100, 101+. Includes total enrollment for each session time and a classroom count. Combine All Days report sums all sessions for all days within the scheduling range.

2 Class Sessions Detail

Provides a list by day of the total enrollments for session start and end time with enrollment totals for ranges 1-30, 31-40, 41-50, 51-60, 61-75, 76-100, 101+. Each session separator includes a detailed list of the courses occurring during that session. Includes total enrollment for each session time and a classroom count. Combine All Days report sums all sessions for all days within the room scheduling capacity.

3 Classroom Use/Availability - Daily

Utilizing eight standard times, graphic scales are used to display a comparison of available and in-use room counts. Select a report that displays availability on a day to day basis or a combination of all days in a single report.

4 Classroom Use/Availability Detail

A list of classrooms in use or idle on a daily basis at eight standard times.

5 Classroom Use/Availability Diagnostic

A detailed list of classrooms are idle or in use on a daily basis, polled at eight standard times. Includes diagnostic calculation fields.

REPORT DESCRIPTIONS

Name

6 Classroom Availability - Weekday Comparison

A graph that compares weekday availability of classrooms at eight standard times.

7 Utilization/Seatfill Summary

Graphs and statistics of a classroom's utilization and seatfill over the selected room scheduling capacity.

8 Utilization/Seatfill Detail

Graphs and statistics of a classroom's utilization and seatfill over the course of a week, including a graphic of hourly seatfill polls through the course of each day.

9 Utilization- Summary

Provides Available, Utilized and Remaining scheduling hours for each building, Utilized and Remaining scheduling hours for each room. Also includes course and enrollment counts for each room.

10 Utilization- Detail

Provides a listing of rooms and their associated scheduled courses. Includes Utilized and Remaining scheduling hours for each room.

REPORT DESCRIPTIONS

Name

11 Room Capacity/Demand Report

Shows enrollment sizes in terms of room count and percent of the total enrollment.

12 Room List

Details the number of courses scheduled for each room, each room's seating capacity, enrollment total, average, minimum and maximum

13 Process Audit List

A detail of the records in the system for the selected report generation parameters.

14 HiRes Daily Classroom Enrollment Detail

A graphic chart of enrollment over the course of a day for a selected classroom, utilizing 5-minute polls. Includes session gap statistics. Requires 11x17 media.

15 Percent of Use - Detail

Includes a Average/Finite generation option: **Average:** A graphic chart of the average percent of use of classrooms for all days from 8:30-10:40, within the selected scheduling capacity. **Finite:** A graphic chart of the percentage of classrooms that are put to use from 8:30-10:40, regardless day, within the selected weekly scheduling capacity. This differs from averaging rooms in use by indicating the number of rooms that are never scheduled at specific daily times throughout the week. Shows actual room count and percentage of total number of rooms in 5-minute polls. Requires 11x17 media.

REPORT DESCRIPTIONS

Name

16 Nonstandard Course Start/End Times - Detail

A list of classrooms that have coursework at nonstandard start and/or end times. The standard start time are: 8:30 AM; 9:55 AM; 11:20 AM; 12:45 PM; 2:10 PM; 3:35 PM; 5:30 PM; 8:10 PM. The standard end times are: 9:45 AM, 11:10 AM, 12:35 PM, 2:00 PM, 3:25 PM, 4:50 PM, 5:20 PM, 8:00 PM, 10:40 PM

17 Utilization/Seatfill Summary- All Rooms

A list of classrooms that includes the following for each room: Utilization, Seatfill, Hours Scheduled Per Week, Enrollment Capacity, Average Enrollment and Area in square feet.

18 Utilization/Seatfill Detail - All Rooms

A batch operation generating report 8 for all rooms. All search parameters are ignored. System will pause after printing 10 pages to allow this operation to continue, continue without pausing or be aborted.

19 Utilization Summary- All Rooms

A list of all classrooms that includes utilization values for each day.

20 Suspended Records Report

A list of all coursework filtered by the import parameters or records removed using the Remove Records Manually function. Provides an option to print a summary or detail report.

REPORT DESCRIPTIONS

Name

21 Utilization/Seatfill Trends from Semester to Semester

Provides a text list of the utilization and seatfills for the entire semesters for all selected semesters.

22 Room List with Coursework

Details the number of courses scheduled for each room, each room's seating capacity, enrollment total, average, minimum and maximum, along with a list of scheduled coursework.

23 Room List with Coursework under 5

Details the number of courses scheduled for each room with enrollments under 5. Details include each room's seating capacity, enrollment total, average, minimum and maximum, along with a list of scheduled coursework.

24 Room Use Data Analysis

A list of classrooms that includes the following for each room: Control (central/local), Utilization, Seatfill and Enrollment Capacity.

25 Room Use Data Analysis- Detail

A list of classrooms that includes the following for each room: Control (central/local); Utilization; Seatfill; Area in SF; Enrollment Capacity; Course Count; enrollment statistics including Minimum, Maximum and Average.

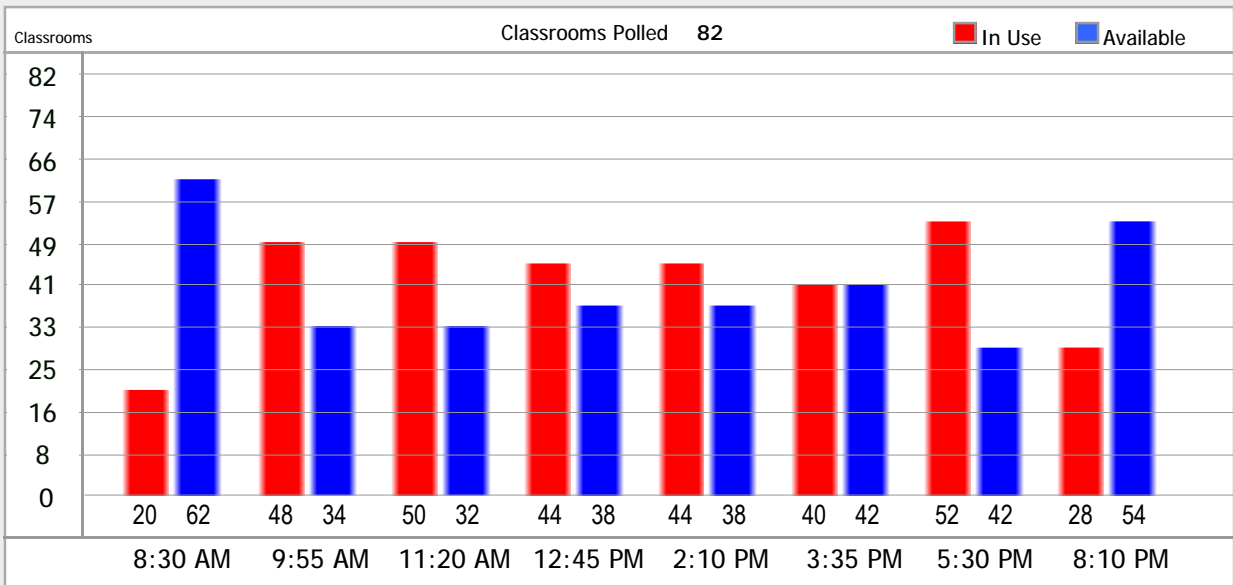
CLASSROOM USE/AVAILABILITY - DAILY

RPT03
CU Version 3.3g

Monday

Fall 2001 Instruction Spaces -

GENERATION SELECTIONS	
Scheduling Capacity	M-TH, 8:30 AM - 10:40 PM; FR, 8:30 AM - 4 PM
Scheduling Control	Central and Local
School	All
	Auditorium, Class Lab, Classroom, Conference, Lecture Hall, Meeting Room, Open Lab, Research Lab, Seminar Room



<u>PERIOD</u>	<u>IN USE</u>	<u>AVAILABLE</u>
8:30 AM to 9:55 AM	20	62
9:55 AM to 11:20 AM	48	34
11:20 AM to 12:45 PM	50	32
12:45 PM to 2:10 PM	44	38
2:10 PM to 3:35 PM	44	38
3:35 PM to 4:50 PM	40	42
5:30 PM to 8:09 PM	52	30
8:10 PM 10:40 PM	28	54

Notes 1. "In Use" indicates that a classroom is unavailable to be scheduled during that period and conversely, "Available" indicates a classroom is available to be scheduled during that same time period. To see which classrooms are available across multiple periods, generate a Classroom Availability/Use Detail.

2. Classes that overlap multiple periods are included in each period in which the class begins, continue through or ends.

CLASSROOM AVAILABILITY

WEEKDAY COMPARISON

Fall 2001 Instruction Spaces - Demo

M-TH, 8:30 AM - 10:40 PM; FR, 8:30 AM - 4 PM

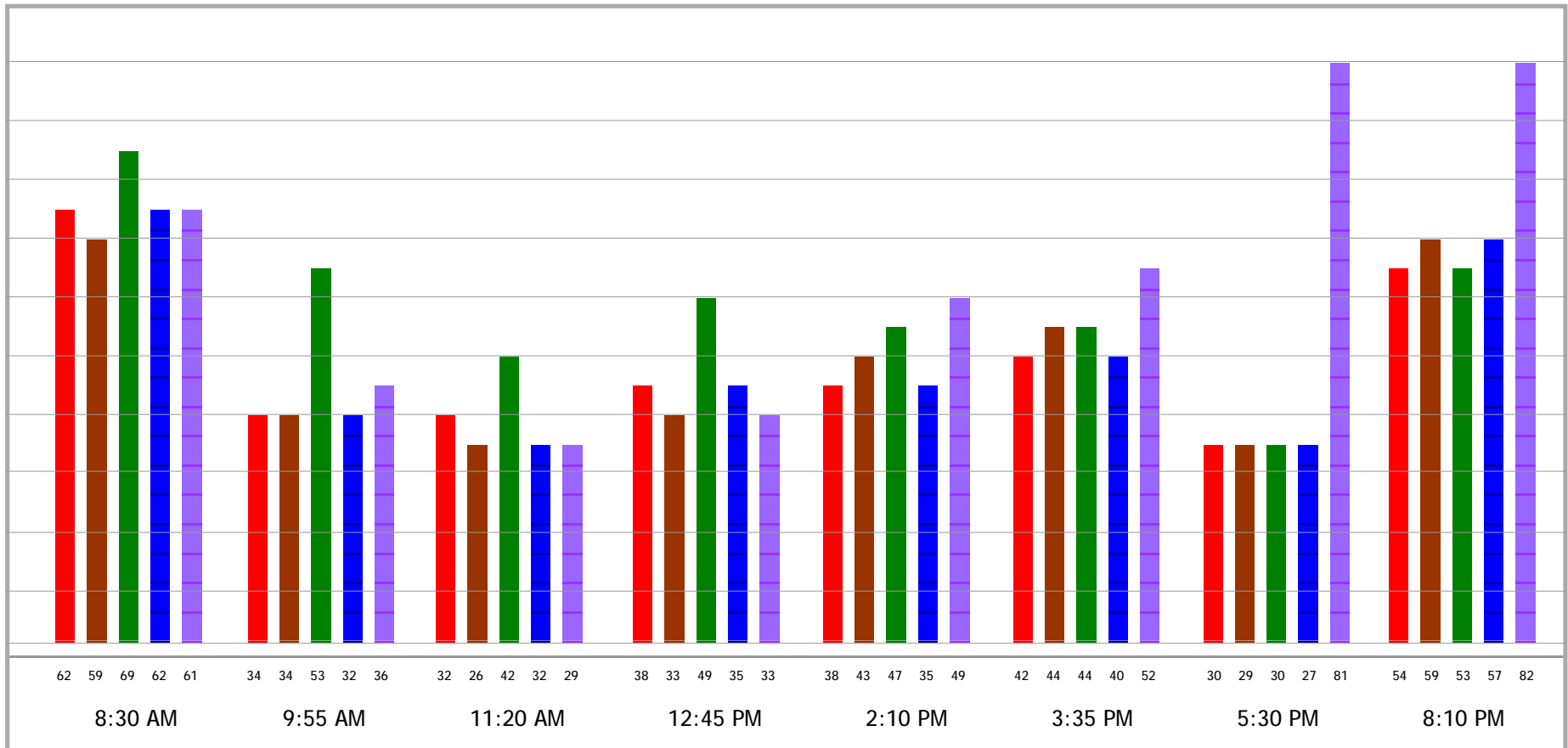
GENERATION SELECTIONS

Scheduling Capacity M-TH, 8:30 AM - 10:40 PM; FR, 8:30 AM - 4 PM
 Scheduling Control Central and Local
 School All
 Auditorium, Class Lab, Classroom, Conference, Lecture Hall,
 Meeting Room, Open Lab, Research Lab, Seminar Room

RPT06
 CU Version 3.3g

Rooms

Classrooms Polled 82



■ MONDAY
 ■ TUESDAY
 ■ WEDNESDAY
 ■ THURSDAY
 ■ FRIDAY



UTILIZATION/SEATFILL DETAIL

Fall 2001 Instruction Spaces -

RPT08

CU Version 3.3g

IMAGES



10/1/2003



TABLET DESKS (MOVABLE AND FIXED)

Anderson Hall

ROOM LL1

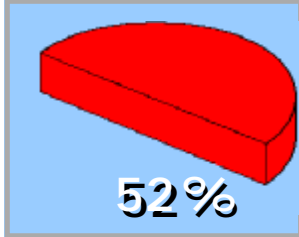
STATS

Room Description	Classroom	Scheduled Hours	30.1
Area(sf)	347	Seat Count	25
Technical Rating	Partially Equipped	Capacity Basis	Registrar's Capacity

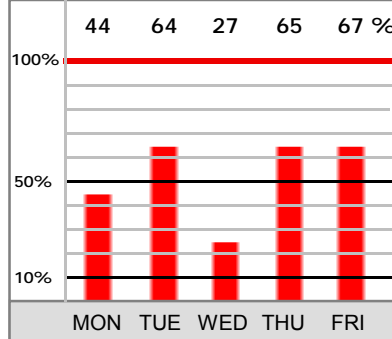
NOTES

"Daily % of Classroom Use" is weighted according to the maximum scheduling capacity of each day: Sunday, Saturday: 15 hours per day; Monday through Thursday: 12.5 hours per day; Friday: 7.5 hours per day

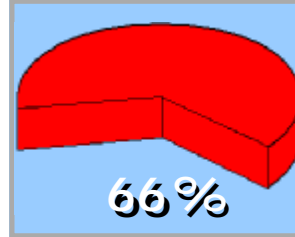
UTILIZATION - %



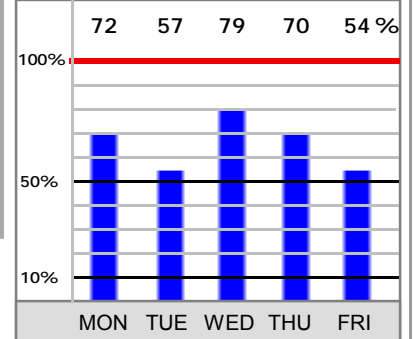
Registrar's Capacity	25
Scheduling Capacity	57.5 Hrs
Sessions Scheduled	12



SEAT FILL - %



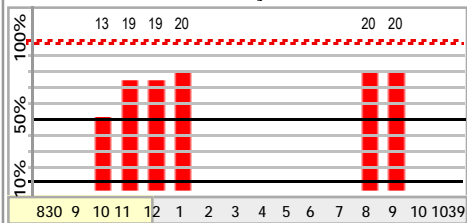
Registrar's Capacity	25
Wkly Enrollment Cap	300
Course Enrollments	199
Courses Per Week	12



Registrar's Capacity = 25

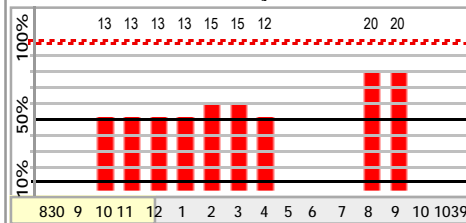
HOURLY ENROLLMENT POLL

Monday



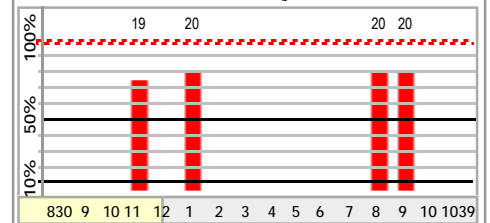
C	DAYS	TITLE	FROM	END	ENRL
ū	MTT	Japanese, Intermediate	09:55 AM	11:10 AM	13
ū	MTH	Spanish, Elementary I	11:20 AM	12:35 PM	19
ū	MTH	Spanish, Elementary I	12:45 PM	02:00 PM	20
ū	MW	Arabic, Elementary I	08:10 PM	09:55 PM	20

Tuesday



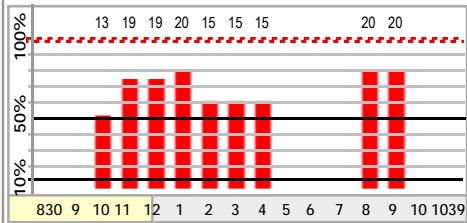
C	DAYS	TITLE	FROM	END	ENRL
ū	MTT	Japanese, Intermediate	09:55 AM	11:10 AM	13
ū	TF	Advanced Japanese I	11:20 AM	12:35 PM	13
ū	TF	Spanish Convers &	12:45 PM	02:00 PM	13
ū	TF	Spanish Convers &	02:10 PM	03:25 PM	15
ū	T	TESOL Research	03:35 PM	04:50 PM	12
ū	TTH	Arabic, Elementary I	08:10 PM	09:55 PM	20

Wednesday



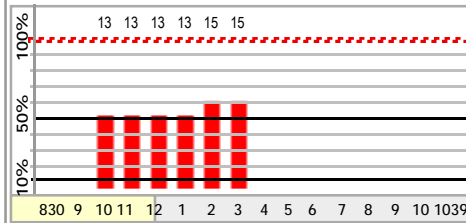
C	DAYS	TITLE	FROM	END	ENRL
ū	W	Spanish, Elementary I	11:20 AM	12:10 PM	19
ū	W	Spanish, Elementary I	01:10 PM	02:00 PM	20
ū	MW	Arabic, Elementary I	08:10 PM	09:55 PM	20

Thursday



C	DAYS	TITLE	FROM	END	ENRL
ū	MTT	Japanese, Intermediate	09:55 AM	11:10 AM	13
ū	MTH	Spanish, Elementary I	11:20 AM	12:35 PM	19
ū	MTH	Spanish, Elementary I	12:45 PM	02:00 PM	20
ū	TH	English Language	02:10 PM	04:50 PM	15
ū	TTH	Arabic, Elementary I	08:10 PM	09:55 PM	20

Friday



C	DAYS	TITLE	FROM	END	ENRL
ū	MTT	Japanese, Intermediate	09:55 AM	11:10 AM	13
ū	TF	Advanced Japanese I	11:20 AM	12:35 PM	13
ū	TF	Spanish Convers &	12:45 PM	02:00 PM	13
ū	TF	Spanish Convers &	02:10 PM	03:25 PM	15



Room Use Data Analysis

Legend:	
Utilization $\geq 70\%$	$< 65\%$
Seatfill $\geq 80\%$	$< 75\%$

Fall 2001 Instruction Spaces - Demo

Based on a Weekly Scheduling Capacity of 57.5 Hours

Building	Room	Control	Utilization %	Seatfill %	Enrollment Capacity
4200 Wisconsin Avenue	321	Central	69.6	84.0	30
4200 Wisconsin Avenue	322	Central	42.6	57.3	30
Anderson Hall	B11	Central	8.7	82.5	20
Anderson Hall	B13	Central	17.4	41.9	31
Anderson Hall	B16	Central	8.7	80.0	20
Anderson Hall	LL1	Central	52.3	66.3	25
Anderson Hall	LL2	Central	39.1	62.5	25
Anderson Hall	LL3	Central	33.3	64.0	25
Asbury Building	212	Central	71.0	64.9	24
Asbury Building	222	Central	71.3	58.9	25
Asbury Building	226	Central	69.9	58.0	25
Beeghly	1	Central	28.3	11.6	94
Beeghly	102	Local	45.2	81.8	25
Beeghly	105	Local	10.4	50.0	16
Beeghly	201	Local	9.3	56.3	16
Brandywine	101	Local	8.7	61.7	30
Clark Hall	100	Local	70.1	104.8	17
Gray Hall	209	Central	69.9	72.8	25
Gray Hall	222	Central	61.2	63.7	25
Hughes Hall	102	Local	26.1	57.5	20
Hurst Hall	102	Central	6.4	52.3	22
Hurst Hall	104	Central	52.8	60.5	32
Hurst Hall	106	Local	54.8	29.4	45
Hurst Hall	107	Local	22.9	50.0	18
Hurst Hall	109	Local	18.6	75.0	18
Hurst Hall	204	Central	22.3	73.3	15
Hurst Hall	205	Central	80.9	53.9	40
Hurst Hall	208	Central	77.4	50.1	40
Hurst Hall	209	Central	67.0	52.2	40



CLASSROOM ANALYSIS

WEEKLY OVERVIEW FOR ALL BUILDINGS

Fall 2001 Instruction Spaces - Demo

GENERATION SELECTIONS

Scheduling Capacity M-TH, 8:30 AM - 10:40 PM; FR, 8:30 AM - 4 PM
 Scheduling Control Central and Local
 School All
 Auditorium, Class Lab, Classroom, Conference, Lecture Hall,
 Meeting Room, Open Lab, Research Lab, Seminar Room

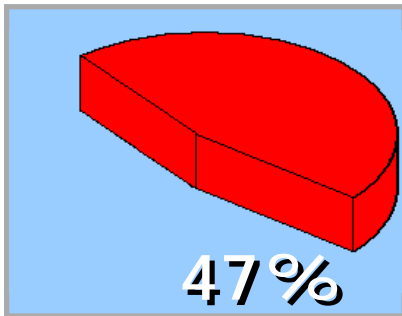
COURSE STATISTICS

M-TH, 8:30 AM - 10:40 PM; FR, 8:30 AM - 4 PM

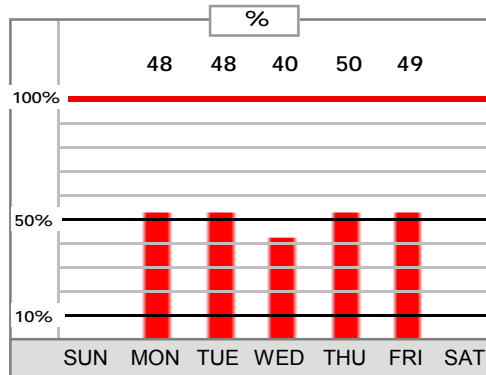
Seating Capacity	2,765	Scheduling Utilization	46.8%	Course Hours Utilized	2,204.8
Classrooms	82	Average Seat Fill	53.6%	Courses	840
Average Room Seating Capacity	33.7	Enrollment Capacity Type	Registrar's Capacity	Total Enrollments	15,179

SCHEDULING UTILIZATION

M-TH, 8:30 AM - 10:40 PM; FR, 8:30 AM - 4 PM

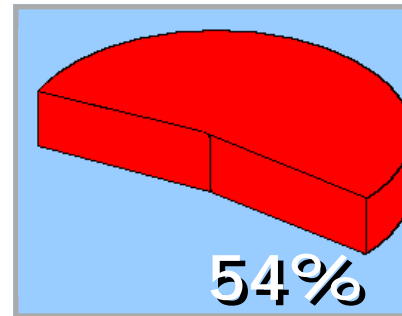


■ UTILIZED

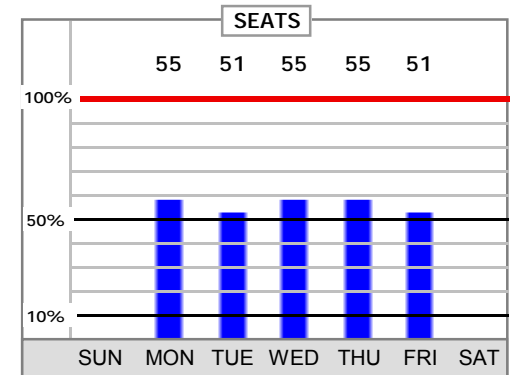


SEAT FILL

M-TH, 8:30 AM - 10:40 PM; FR, 8:30 AM - 4 PM



■ UTILIZED





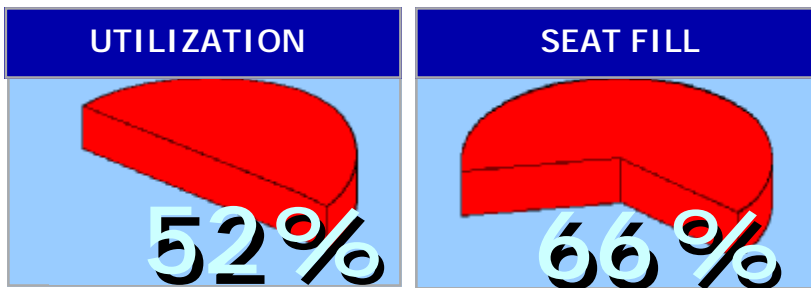
CLASSROOM UTILIZATION - WEEKDAY OVERVIEW

Anderson Hall Room LL1

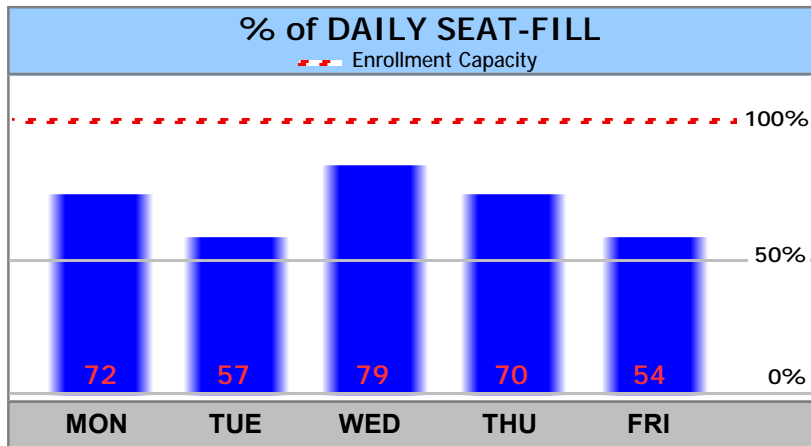
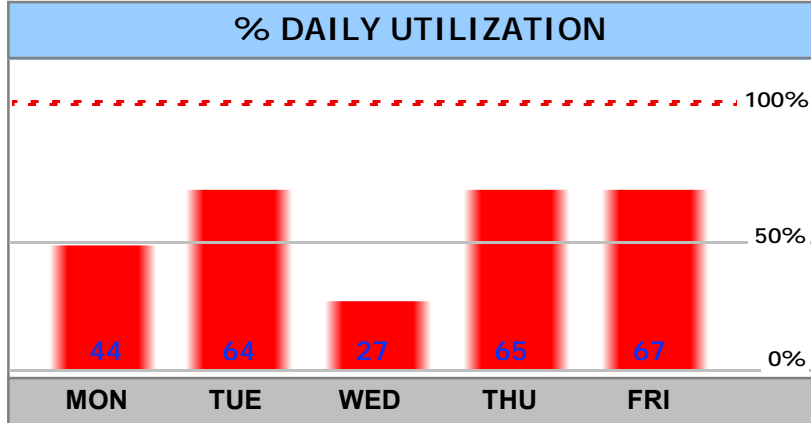
Fall 2001 Instruction Spaces - Demo

10/31/2007

5:22:57 PM



■ UTILIZED



STATISTICS			
Weekly Hours Utilized	30.1	Course Enrollments	199
Weekly Scheduling Capacity	57.5	Seat Fill	66.3 %
Utilization	52.3 %	Courses Per Week	12
Enrollment Capacity	25	Average Seat Fill	17
Capacity Basis	Registrar's		

COURSE LIST							
SECTION	TITLE	DAYS	START- END	Tot Enrollments	Course Count	Session Duration, Hrs	Scheduled Hrs/Week
JAPN-214-001	Japanese, Intermediate I	MTTH	9:55 AM to 11:10 AM	13	ū	1.25	5.0
ARAB-102-001	Arabic, Elementary I	MW	8:10 PM to 9:55 PM	20	ū	1.75	3.5
SPAN-152-003	Spanish, Elementary I	MTH	11:20 AM to 12:35	19	ū	1.25	2.5
SPAN-152-004	Spanish, Elementary I	MTH	12:45 PM to 2:00 PM	20	ū	1.25	2.5
TESL-560-004	TESOL Research	T	3:35 PM to 4:50 PM	12	ū	1.25	1.3
ARAB-102-003	Arabic, Elementary I	TTH	8:10 PM to 9:55 PM	20	ū	1.75	3.5
JAPN-314-001	Advanced Japanese I	TF	11:20 AM to 12:35	13	ū	1.25	2.5
SPAN-352-008	Spanish Convers & Comp I	TF	12:45 PM to 2:00 PM	13	ū	1.25	2.5
SPAN-352-001	Spanish Convers & Comp I	TF	2:10 PM to 3:25 PM	15	ū	1.25	2.5
SPAN-152-003	Spanish, Elementary I	W	11:20 AM to 12:10	19	ū	0.83	0.8
SPAN-152-004	Spanish, Elementary I	W	1:10 PM to 2:00 PM	20	ū	0.83	0.8
TESL-501-002	English Language Teaching I	TH	2:10 PM to 4:50 PM	15	ū	2.67	2.7





CLASSROOM COMPARISON

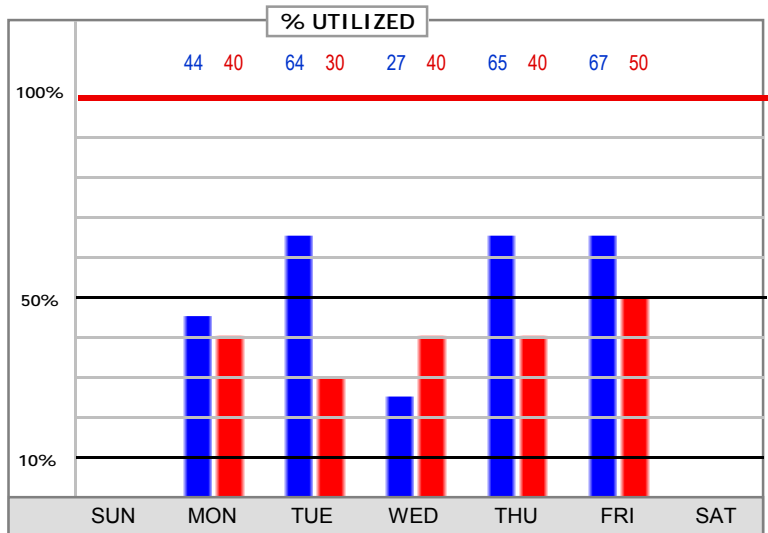
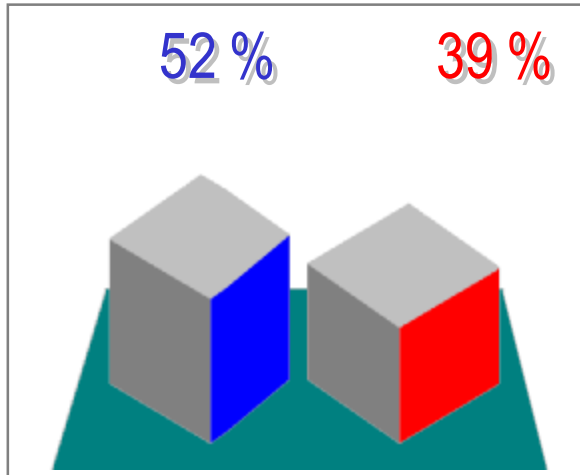
WEEKLY OVERVIEW - 57.5 HOUR BASE

Capacity Basis Registrar's Capacity

Central and Local Control

Semester Fall 2001 Instruction Spaces - Demo Bldg Anderson Hall Rm LL1		Semester Fall 2001 Instruction Spaces - Demo Bldg Anderson Hall Rm LL2	
	area 347 SeatCount 25 Course Hours Scheduled 30.1 Utilization 52.3 % Course Enrollments 199 Wkly Enrollment Cap 300 Seating Capacity 25 Courses Per Week 12 Seat Fill 66.3 % Average Seat Fill 17		area 353 SeatCount 25 Course Hours Scheduled 22.5 Utilization 39.1 % Course Enrollments 172 Wkly Enrollment Cap 325 Seating Capacity 25 Courses Per Week 11 Seat Fill 62.5 % Average Seat Fill 16

UTILIZATION



SEAT-FILL

